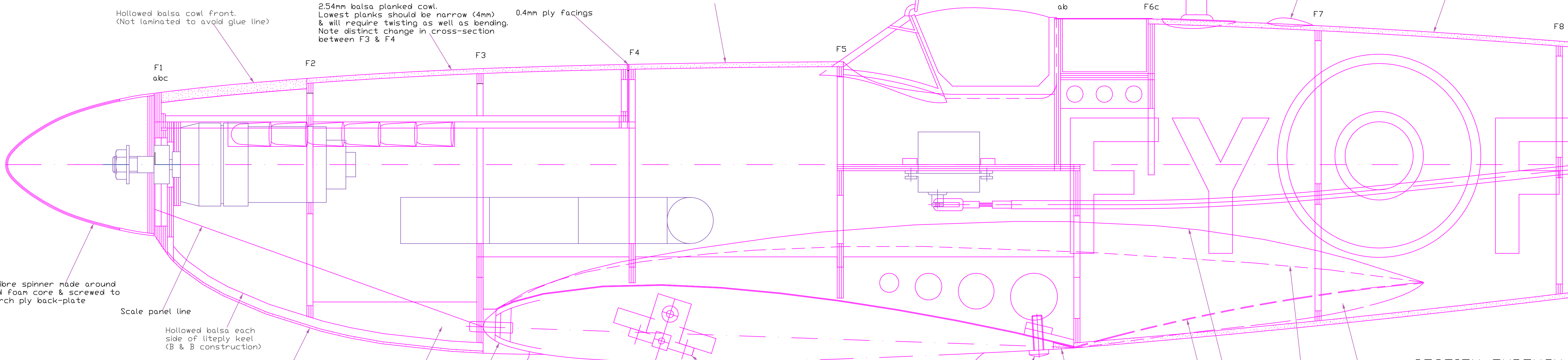
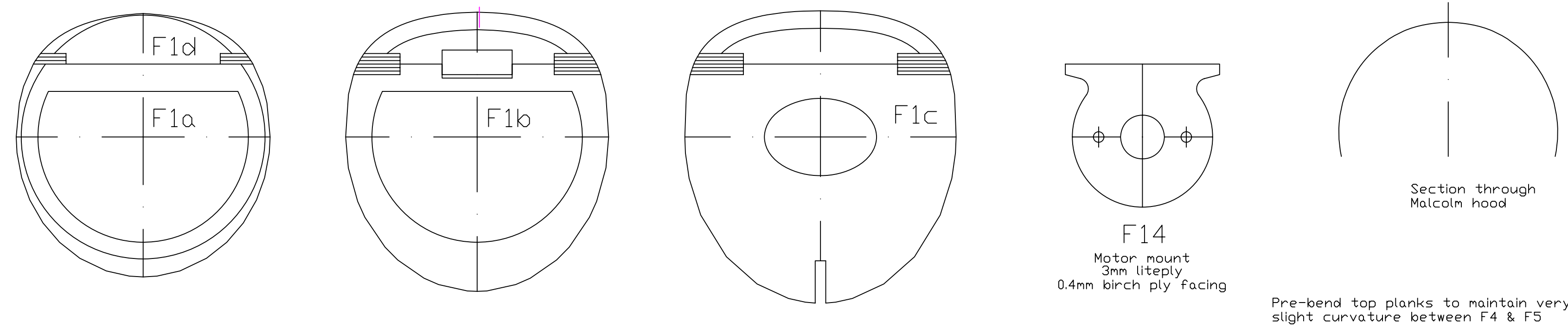


KEEP IT LIGHT !!!

All balsa light grade



FUSELAGE CONSTRUCTION GUIDELINES
 Build lower half of fuselage over plan.
 Remove from plan.
 Add upper part of formers & sub-assemblies 2 & 3.
 Plank upper half of fuselage.
 Build underside of nose (b & c construction).
 Add tailplane saddles.
 Build wing root fairings with wing centre-section screwed in position.

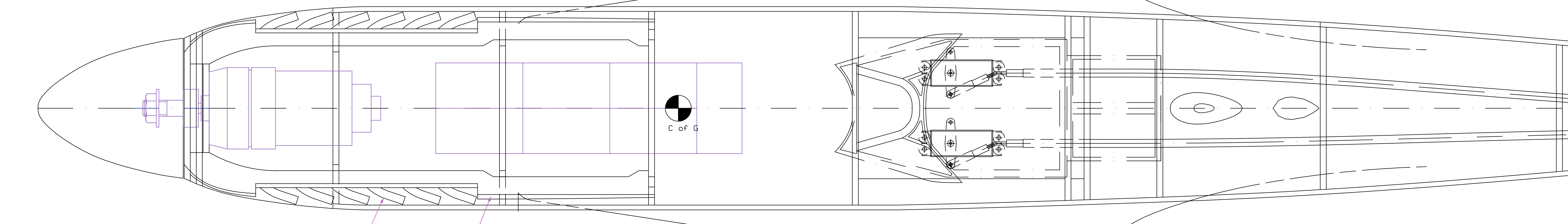
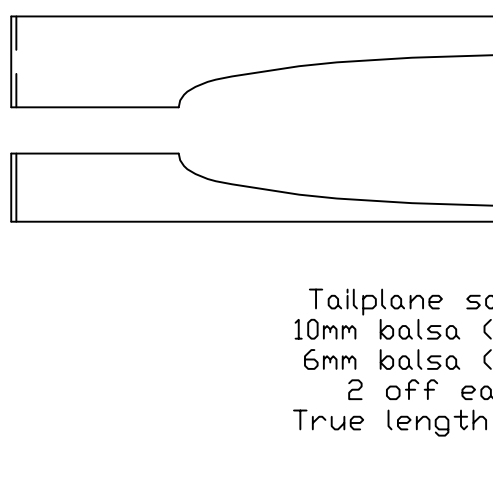
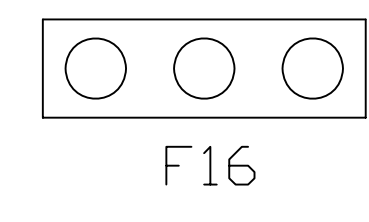
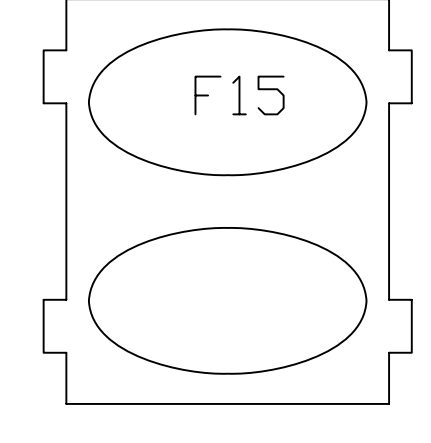
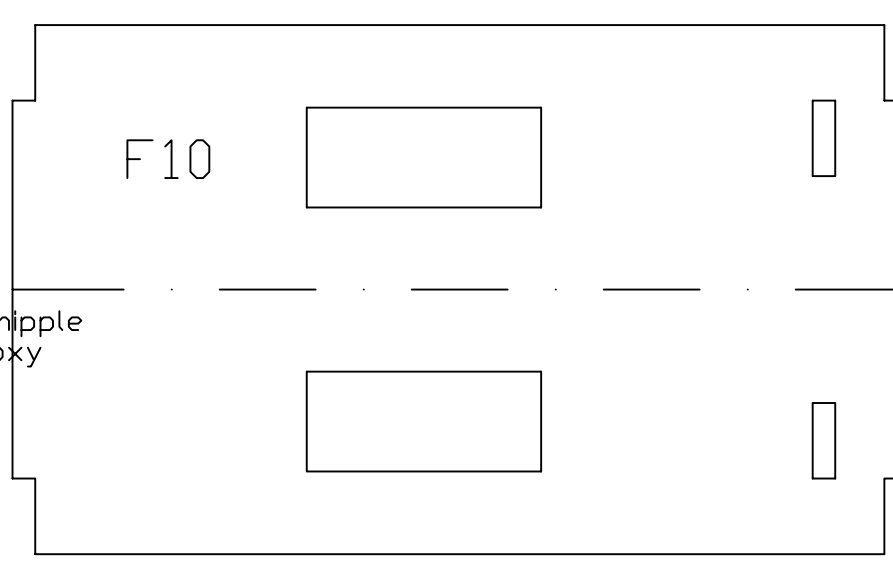
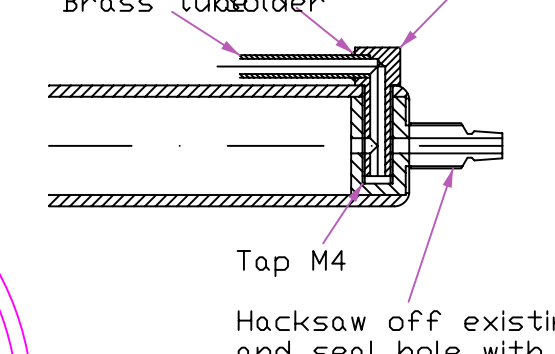
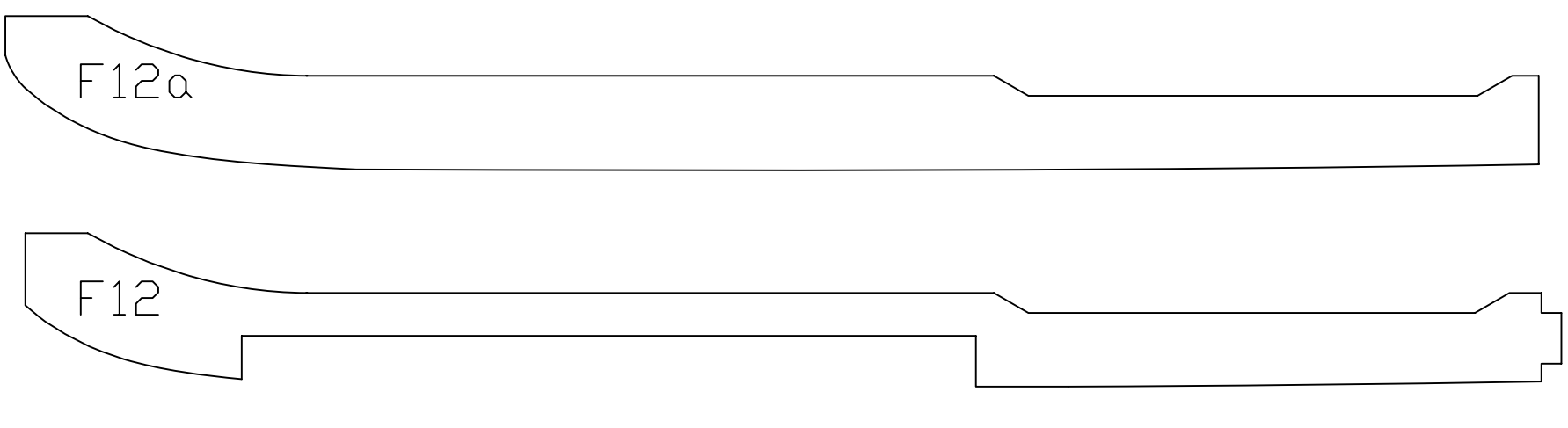
Hollowed balsa cowl front. (Not laminated to avoid glue line)
 2.54mm balsa planked cowl. Lowest planks should be narrow (4mm) & will require twisting as well as bending. Note distinct change in cross-section between F3 & F4.
 0.4mm ply facings
 Pre-bend top planks to maintain very slight curvature between F4 & F5

Eurokit Mini Air Retracts shown. Modify connection to keep air supply clear of wheel-well

Pair of M5 nylon screws
 Radiators
 See wing drawing

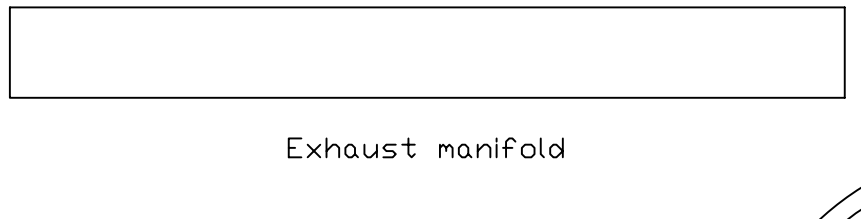
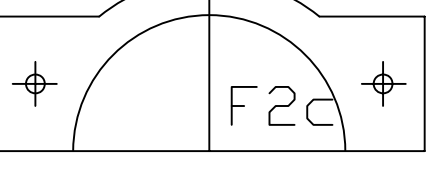
Scale panel line
 Fair underside of fairing base into fuselage using lightweight file

SECTION THROUGH FUSELAGE

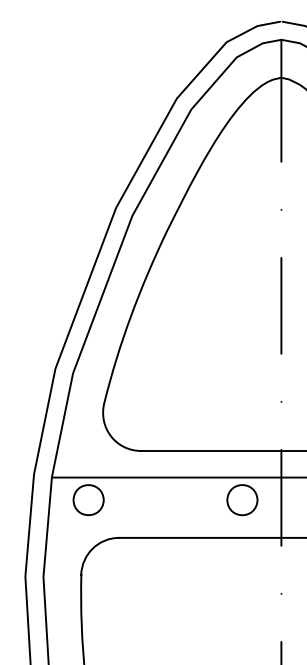
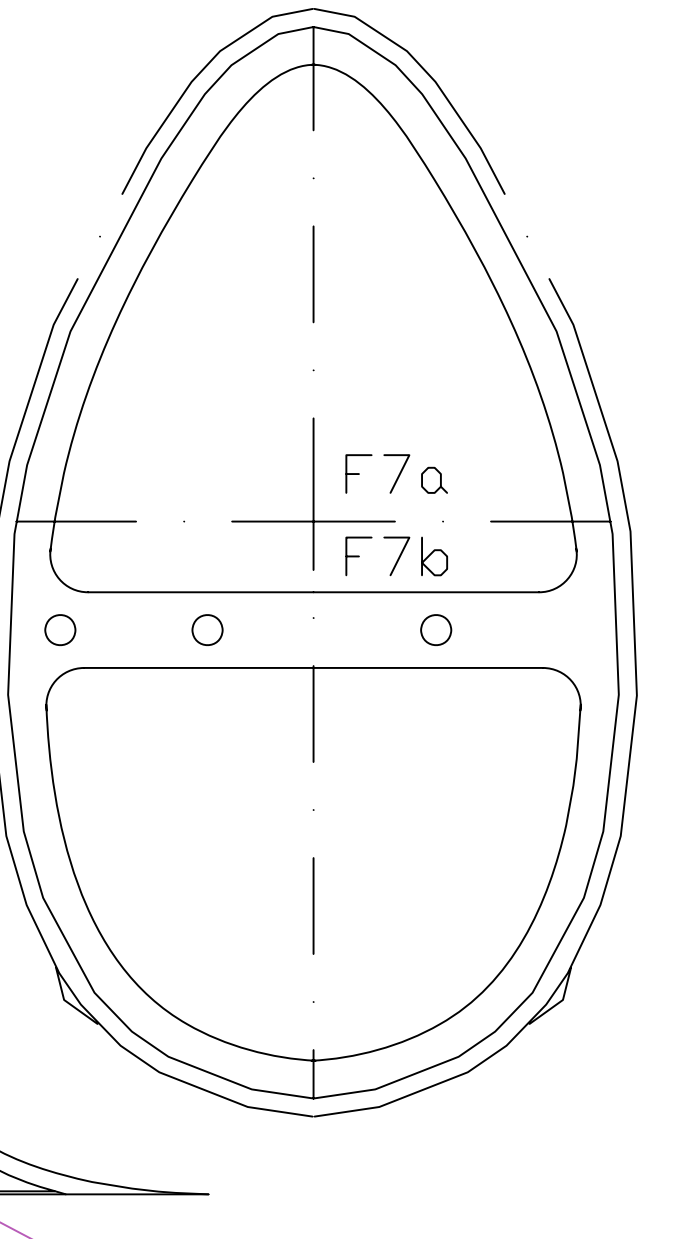
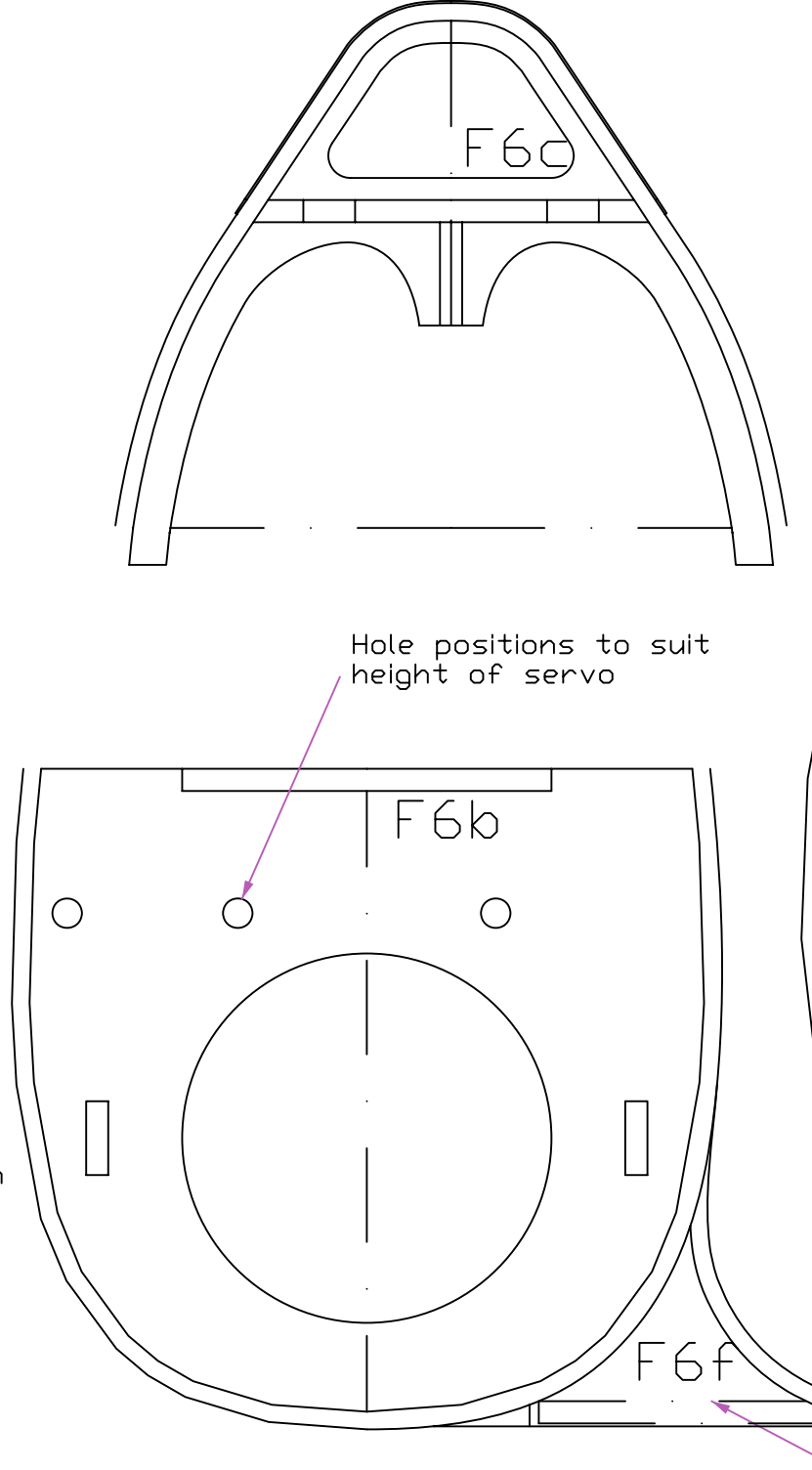
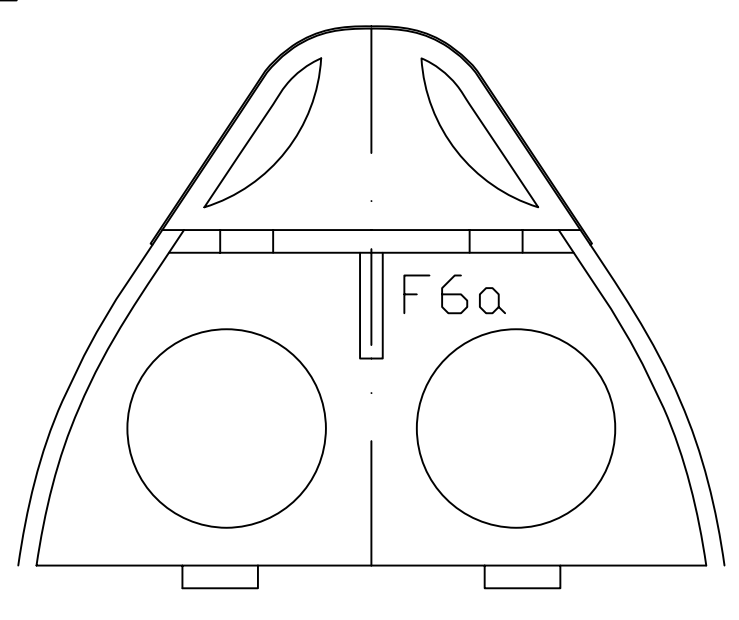
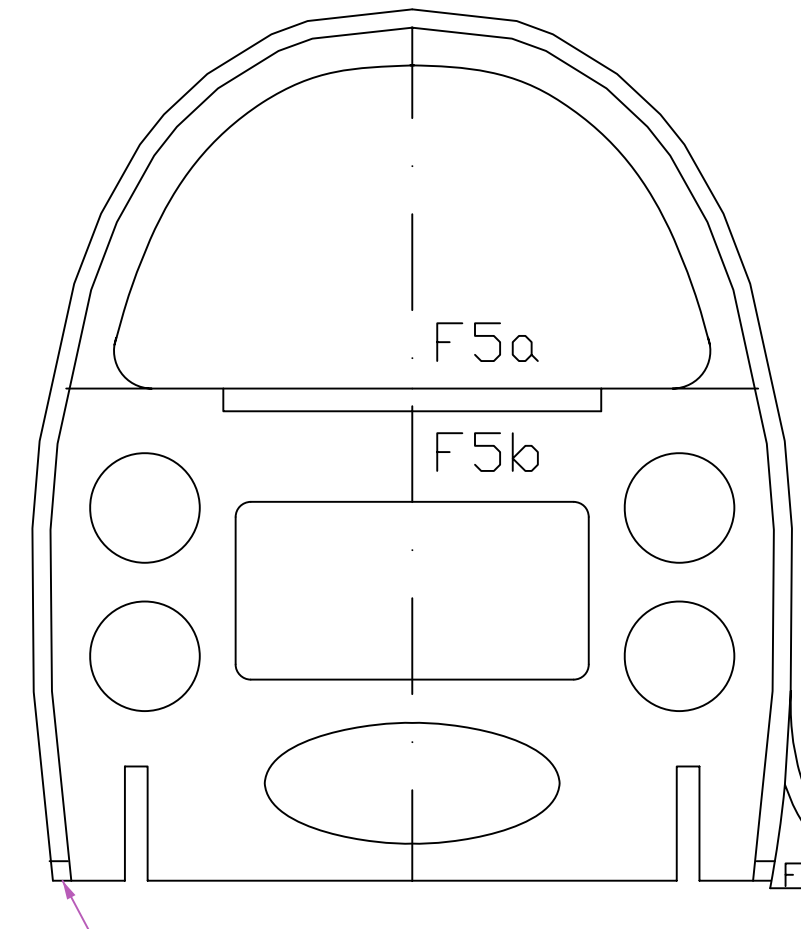
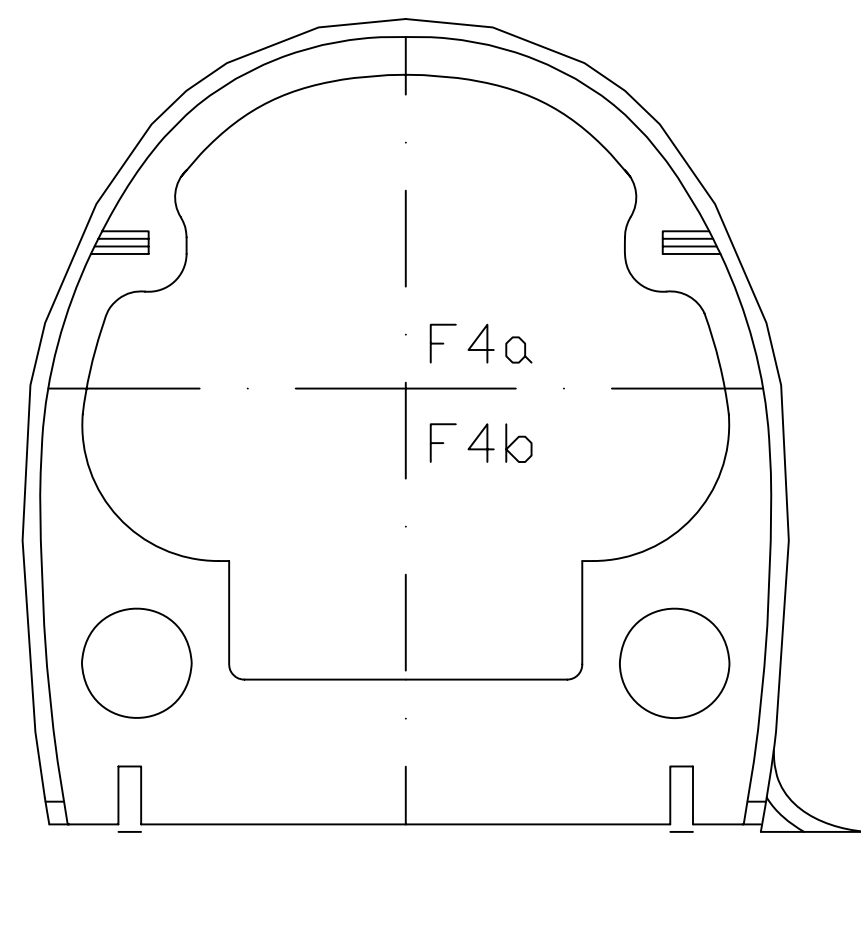
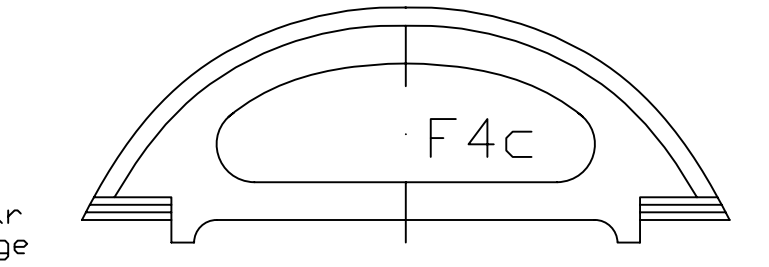
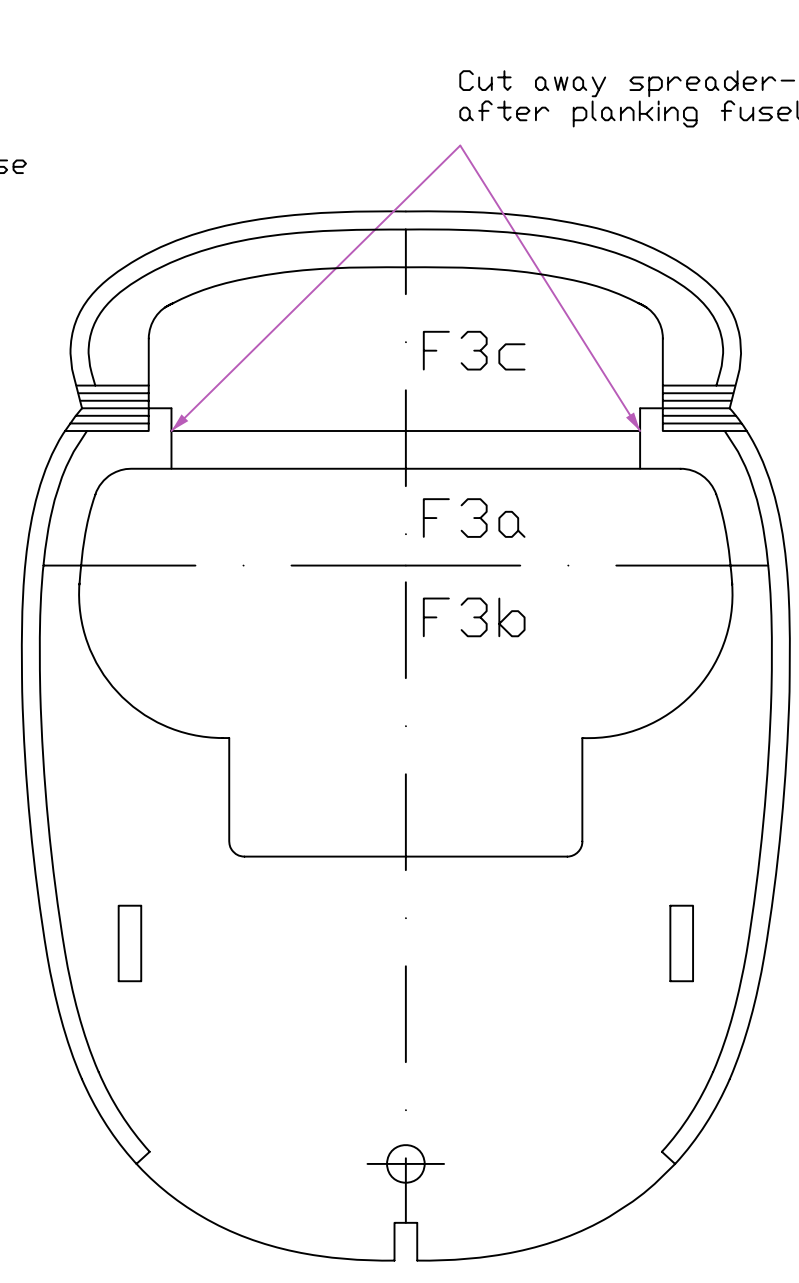
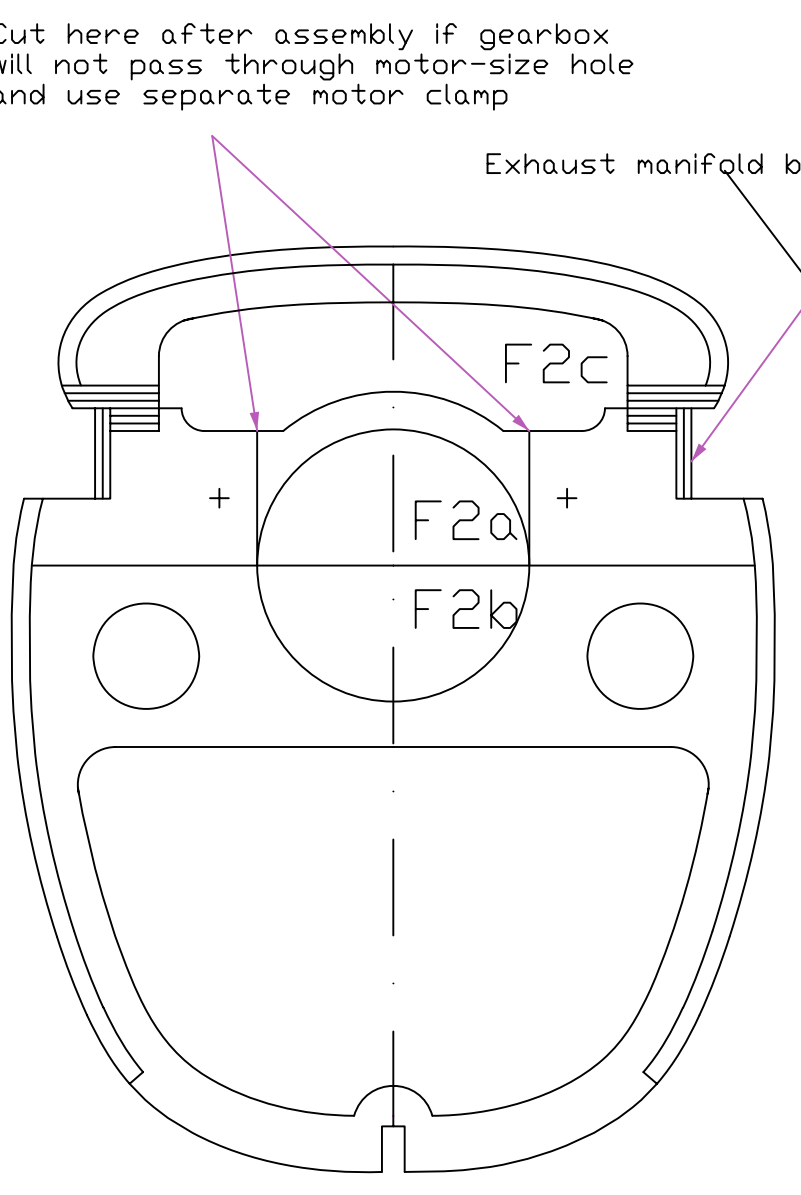


Mould exhaust stubs from plastic tubing heated over mandrel
 Sanded chamfer
 True-to-scale wing root fairing shape

PLAN VIEW OMITTING PLANKING & FIN TAILPLANE HALF-SHEETED



Sub assemblies:-
 No.1 F3b, F4a, F5b, F6b, F10 & F11(2)
 No.2 F1a,b,c, F2a, F3a, F4a, F12(2), F13 & F14
 No.3 F6a, F6c, F15 & F16
 No.4 F1d, F2c, F3c, F4c & F12



All F-series parts from 3mm liteply

Edge formers with 2.5mm thick balsa between lowest part of planking and bottom edge of former to provide gluing surface for fillet formers

Wing root fairings planked with 2.5mm balsa aft of F4. Scrap balsa & fillet ahead. Plank fairing with ply base taped snugly against wing centre-section

3mm sq. balsa strip 0.4mm above front edge to support wing root fairing base