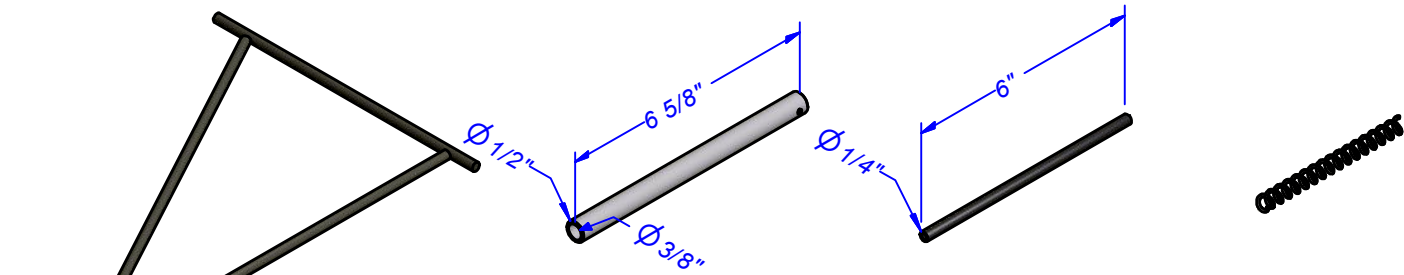


PC-6 Landing gear



- ☐ #PC6-LL Left leg ass'y (1 req.)
- ☐ #PC6-RL Right leg ass'y (1 req.)

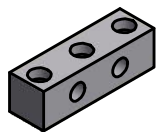
- ☐ #PC6-LA Lower oleo strut (2 req.)

- ☐ #PC6-L8 Upper oleo strut (Graphite tube) (2 req.)

- ☐ #B-619 (Spaenaur) Compression spring (Ø5/16" x 11 1/2" lg.) Cut in half (1 req.)

- ☐ DUB144 Threaded rod 4-40 x 12" (2 req.)

Hardware kit #PC-6 LGH



- ☐ #PC6-L9 Landing gear holder (2 req.)



- ☐ #PC6-L10 Lower strut bracket (2 req.)



- ☐ #PC6-L11 Lower strut hand (2 req.)



- ☐ #PC6-L14 Lower strut head (2 req.)



- ☐ #PC6-L5 Piston (Part 1) (2 req.)



- ☐ #PC6-L5a Piston (Part 2) (2 req.)



- ☐ #O-ring-2-4 Piston O-ring (2 req.)



- ☐ #DUB336 Threaded coupler 4-40 (1 pkg of 2 req.)



- ☐ #DUB302 4-40 Rod ends (1 pkg of 2 req.)

- ☐ Socket head cap screw #6-32 x 1" lg. (6 req.)
- ☐ Socket head cap screw #6-32 x 1/4" lg. (2 req.)
- ☐ Socket head cap screw (Stainless) #4-40 x 3/4" lg. (4 req.)
- ☐ Bling nut #6-32 (6 req.)
- ☐ Nylock Nut (Stainless) #4-40 (6 req.)



- ☐ #PC6-L12 Graphite rod bushing (2 req.)

