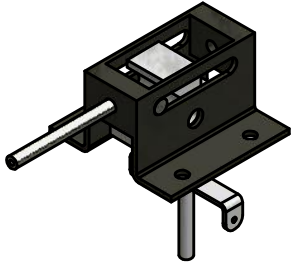
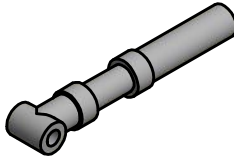


CL-415 Nose gear (Servo actuated)



□ ROB592M
90° Mechanical Nose gear
(1 req.)



□ ROB650
Robart Ø3/8"
Straight Robostrut
(1 req.)



□ DUB156
Nose gear block
(1 req.)



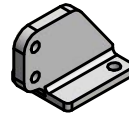
□ DUB700
Pushrod housing
(1x 6" lg.)



□ DUB212
2-56 Threaded
coupler
(4 req.)



□ DUB600
2-56 Spring Kwik Link
(7 req.)



□ DUB107
Control Horn
(to be modified)
(2 req.)



□ DUB172
2-56 Threaded rod
(4 req.)

