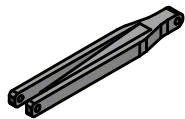




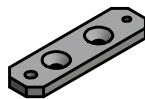
CL-415 Main landing gear (Servo actuated)



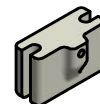
□ CL415-80-A1
Music wire Ø1/8" x 5" lg.
(3 req.)



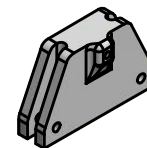
□ CL415-80-A2
Lower Lock Arm
(2 req.)



□ CL415-80-A3
Mounting Bracket
(4 req.)



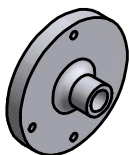
□ CL415-80-A4
Lower slider
(1 req.)



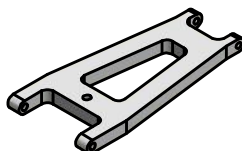
□ CL415-80-A5
Upper slider
(1 req.)



□ CL415-80-A6
Round Brass tube
Ø1/8" x 3/8" lg.
(1 req.)



□ CL415-80-A8
Servo Horn
(1 req.)



□ CL415-80-GL
Lower Tab
(2 req.)



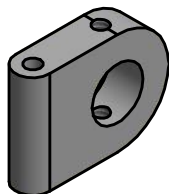
□ CL415-80-LA1
Upper Lock Arm Hand
(2 req.)



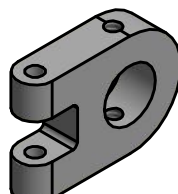
□ CL415-80-LA2
Music Wire
Ø1/16" x 1/2" lg.
(1 req.)



□ CL415-80-SA1
Servo Arm
(2 req.)



□ CL415-80-ST1
Lower Leg Bracket
(2 req.)



□ CL415-80-ST2
Upper Leg Bracket
(2 req.)



□ DUB139
Wheel Collar Ø1/8"
(4 req.)



□ DUB3366
Swivel Ball Link
(1 pack of 2)



□ DUB557
Nylon Horn Bracket
(2 req.)



□ DUB599
Wheel Collar Ø7/32"2-56
(4 req.)



□ DUB600
Spring Kwik Link
(2 req.)



□ DUB861
Swivel Ball Link 4-40
(14 req.)



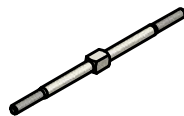
□ FHSS-6C06
Flat Head Socket Screw
6-32x3/8"
(8 req.)



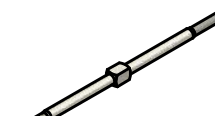
□ HAN3550
Titanium Turnbuckle
1 1/2" lg.
(1 req.)



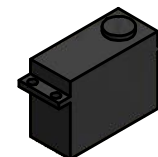
□ HAN3551
Titanium Turnbuckle
2" lg.
(2req.)



□ HAN3552
Titanium Turnbuckle
2 1/2" lg.
(2 req.)



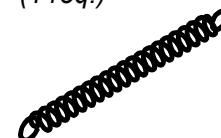
□ HAN3553
Titanium Turnbuckle
3" lg.
(6 req.)



□ HS-815BB
Sail Servo
(1 req.)

- SHCS (Stainless) 2-56 x 1/2" lg. (2 req.)
- SHCS (Stainless) 4-40 x 1/4" lg. (4 req.)
- SHCS (Stainless) 4-40 x 5/8" lg. (3 req.)
- SHCS (Stainless) 10-32 x 3/4" lg. (2 req.)

- SHCS (Stainless) 4-40 x 3/4" lg. (3 req.)
- SHCS (Stainless) 4-40 x 1 1/4" lg. (4 req.)
- Nylock Nut (Stainless) 4-40 (4 req.)



□ B-650
Extension spring
(1 req.)

