

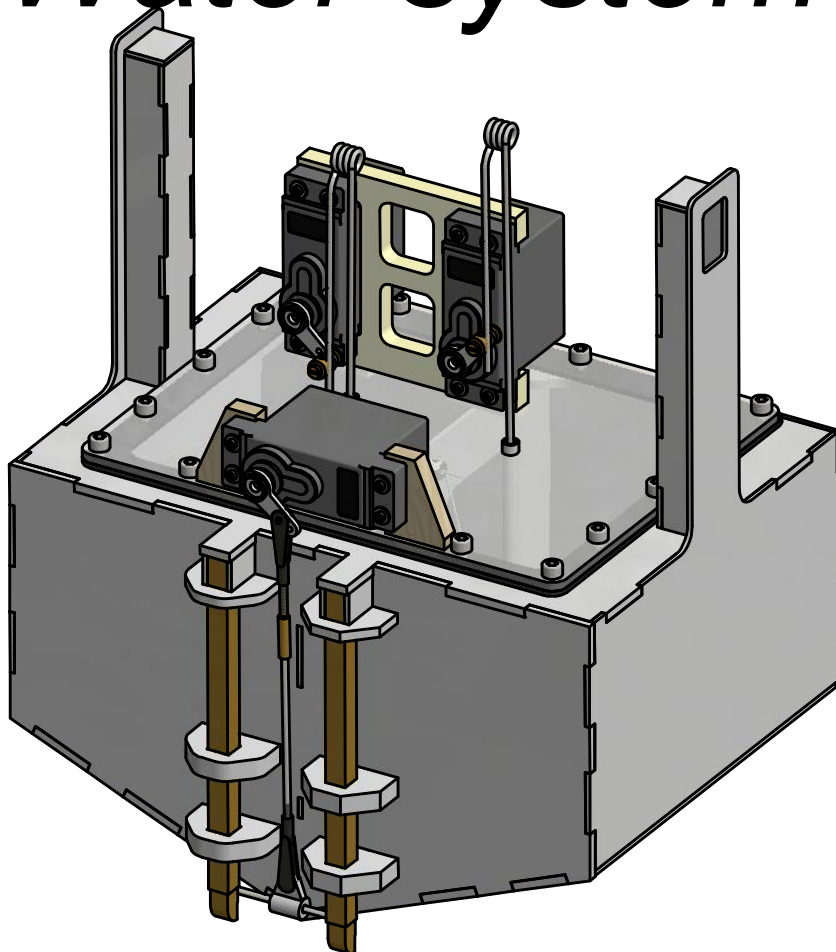
2



1

CL-415 (80")

Water system



MR Herodesign
Martin Rousseau

2



1

11-2012



CL-415 (80") water system

Parts listing



☐ DUB595
1/16" Wheel collar
(10 req.)



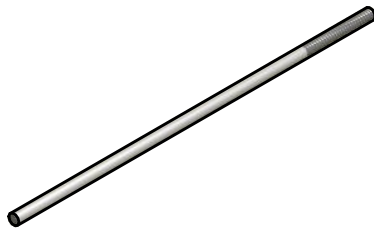
☐ DUB212
2-56 Threaded coupler
(1 req.)



☐ DUB860
2-56 Swivel ball link
(2 req.)



☐ SH-6C006
Nylon Screw
6-32 x 3/8" lg.
(18 req.)



☐ DUB172
2-56 Threaded rod x 12" lg.
(3 req.)



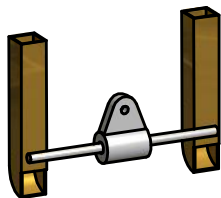
☐ B-656
Tension spring
(2 req.)



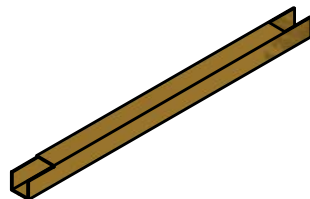
☐ SS2-07
Servo Screw
(12 req.)



☐ DUB600
2-56 Quick link
(2 req.)



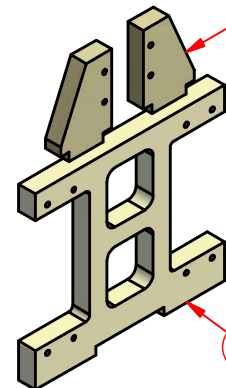
☐ WS-Scoop
Water Scoop ass'y
(1 req.)



☐ WSE-02
1/4" square brass tube
(2 req.)



☐ DUB605
E/Z Connector (Ø.072")
(2 req.)



WS-18

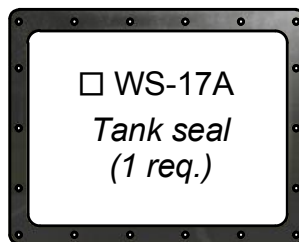
WS-25

☐ WS-18 Ply 1/4" (2 req.)

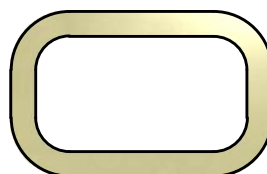
☐ WS-25 Ply 1/4" (1 req.)



☐ DUB700
Plastic tube Ø1/8" x 1 3/4" lg.
(2 req.)



☐ WS-17A
Tank seal
(1 req.)



☐ WS-S1
Water door seal
(2 req.)

☐ Music Wire Ø1/16 x 8" lg. (1 req.)

☐ Steel wire 12" lg. (1 req.)

☐ Acrylic laser cut parts kit (1 req.)

MR Aerodesign

www.mraerodesign.com

CL-415 (80")

Water system parts listing

Dwg by: M.Rousseau

Sheet

Date: 10-09-10

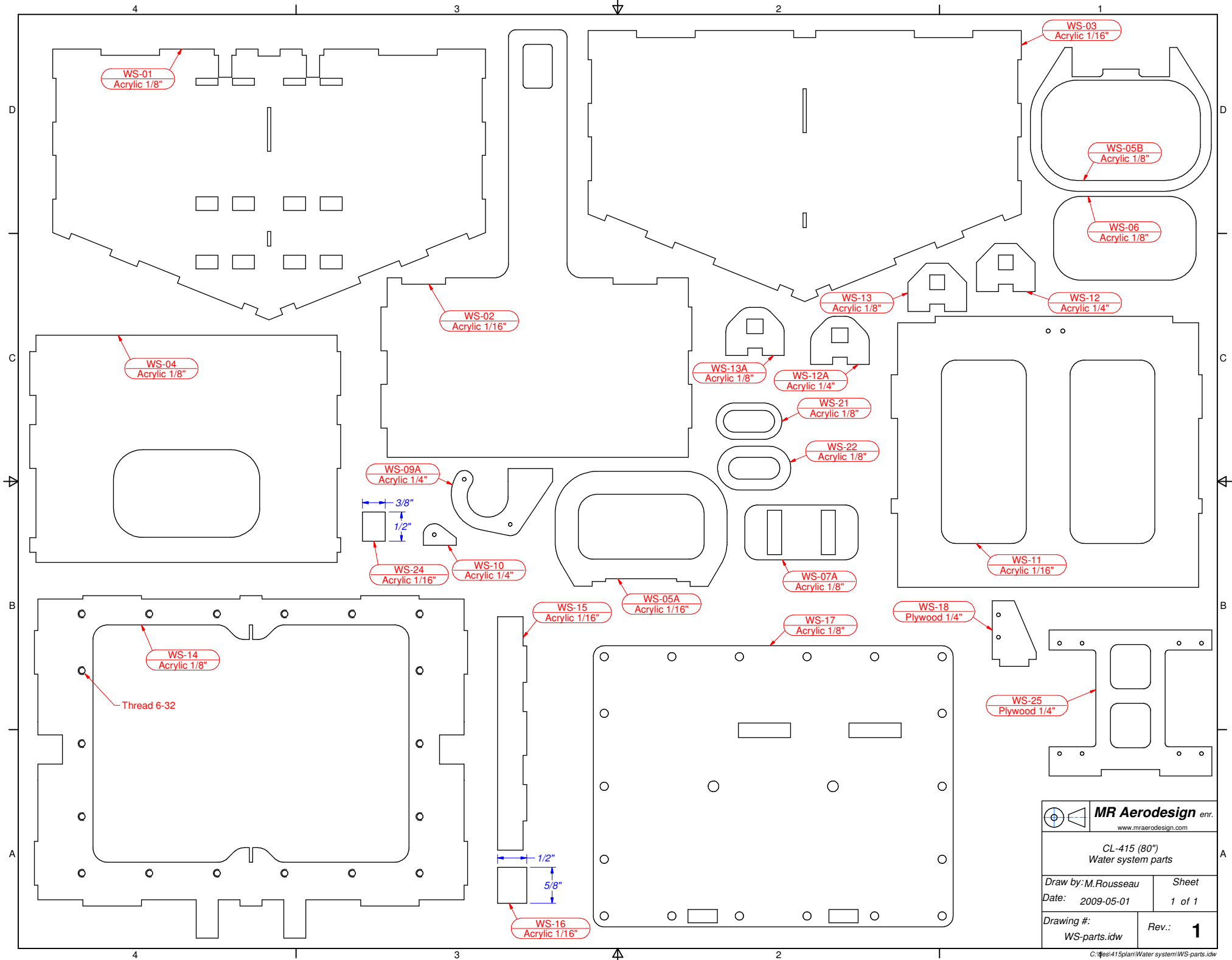
1 of 1


Drawing No:

WS-Part listing.idw

Rev.: 2





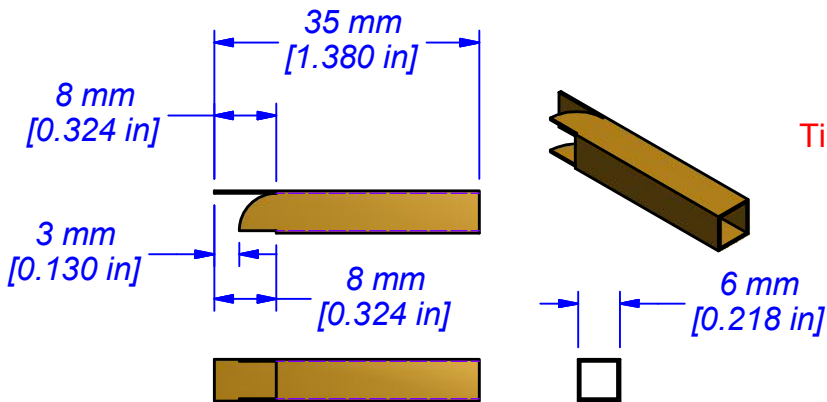
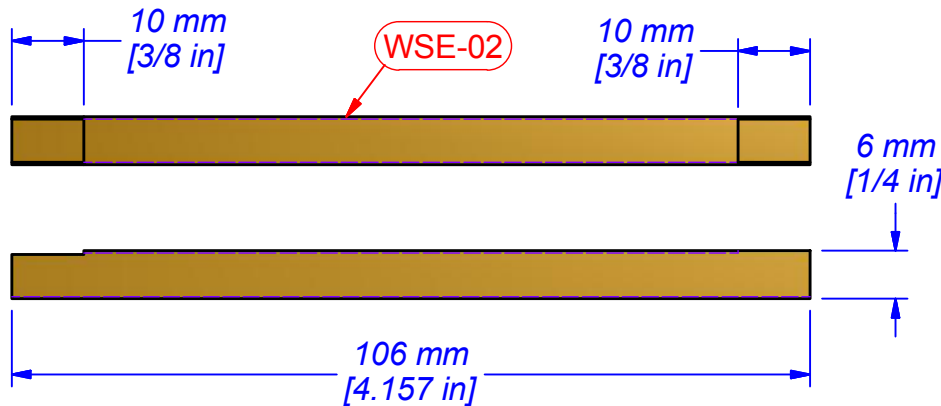
 MR Aerodesign enr. www.mraerodesign.com	
CL-415 (80") Water system parts	
Draw by: M. Rousseau Date: 2009-05-01	Sheet 1 of 1
Drawing #: WS-parts.idw	Rev.: 1

2

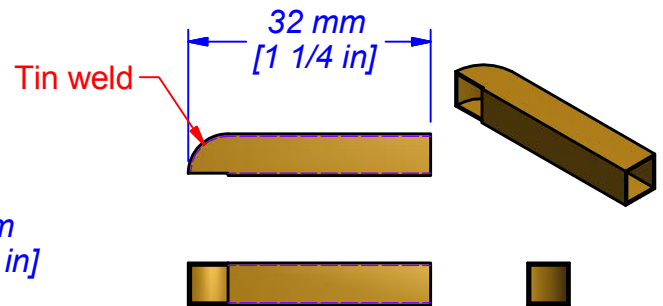
1

Water system

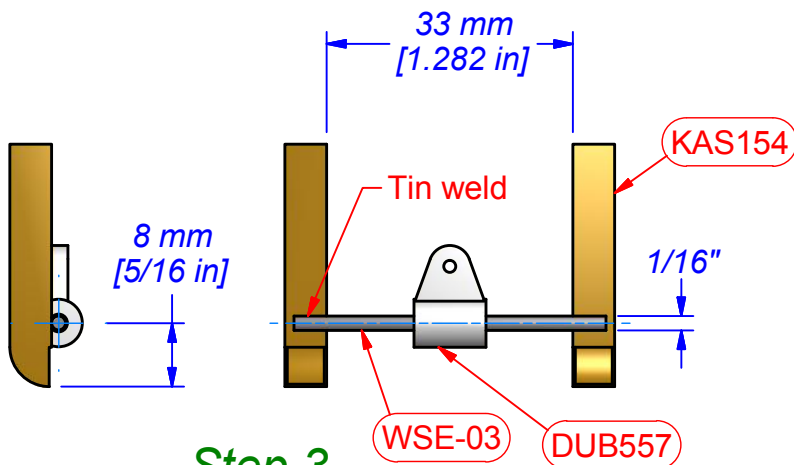
Brass parts detail



Step 1
SCALE 1 : 1



Step 2
SCALE 1 : 1



Step 3
Scoop ass'y
SCALE 1 : 1

	MR Aerodesign enr. www.mraerodesign.com
Water system Water system Brass parts	
Draw by: M. Rousseau Date: 2009-05-01	Sheet 2 of 2
Drawing #: water system.idw	Rev.: 0

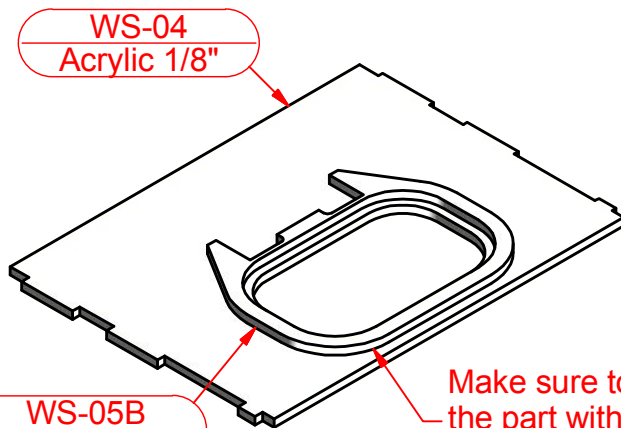
2

4

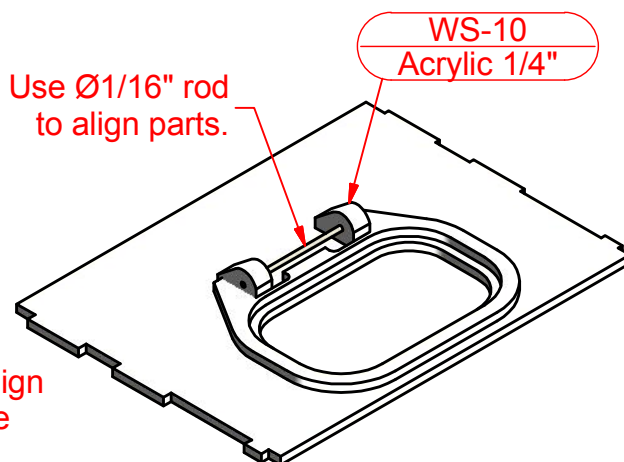
CL-415 Water system

Door seal

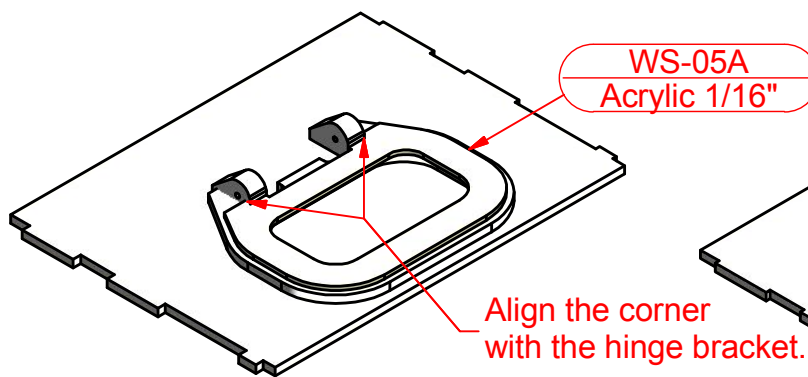
(2 req.)



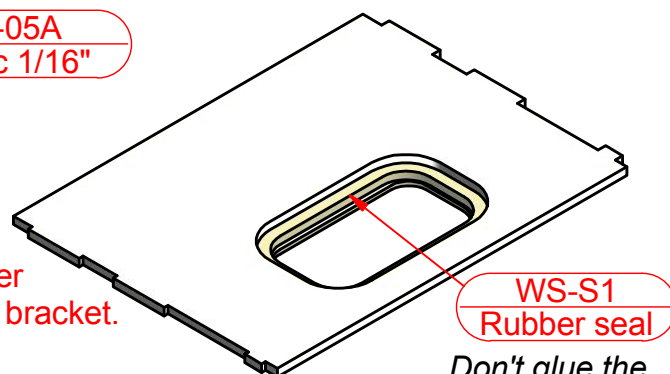
Step 1



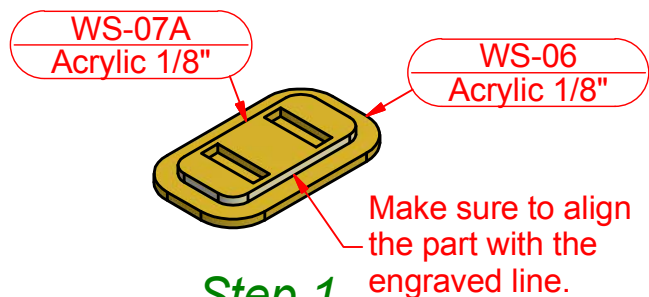
Step 2



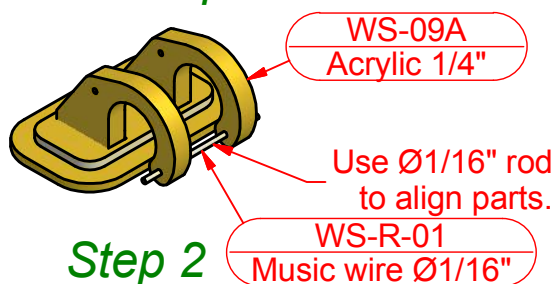
Step 3



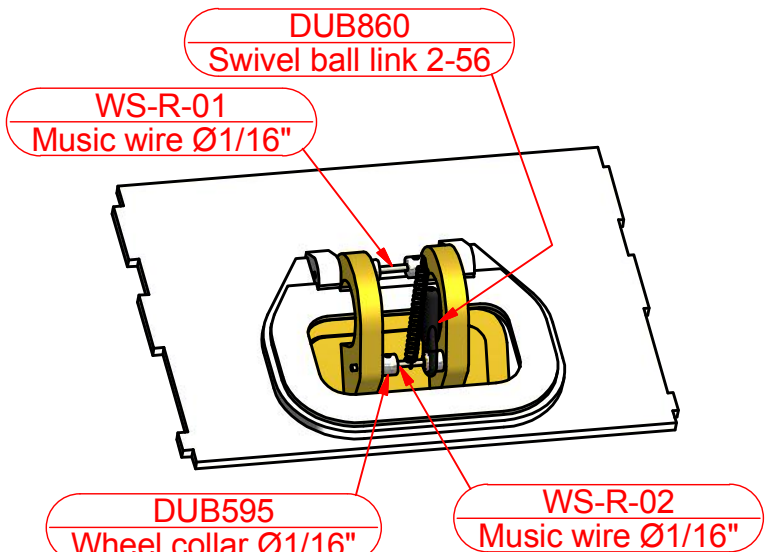
Step 4



Step 1

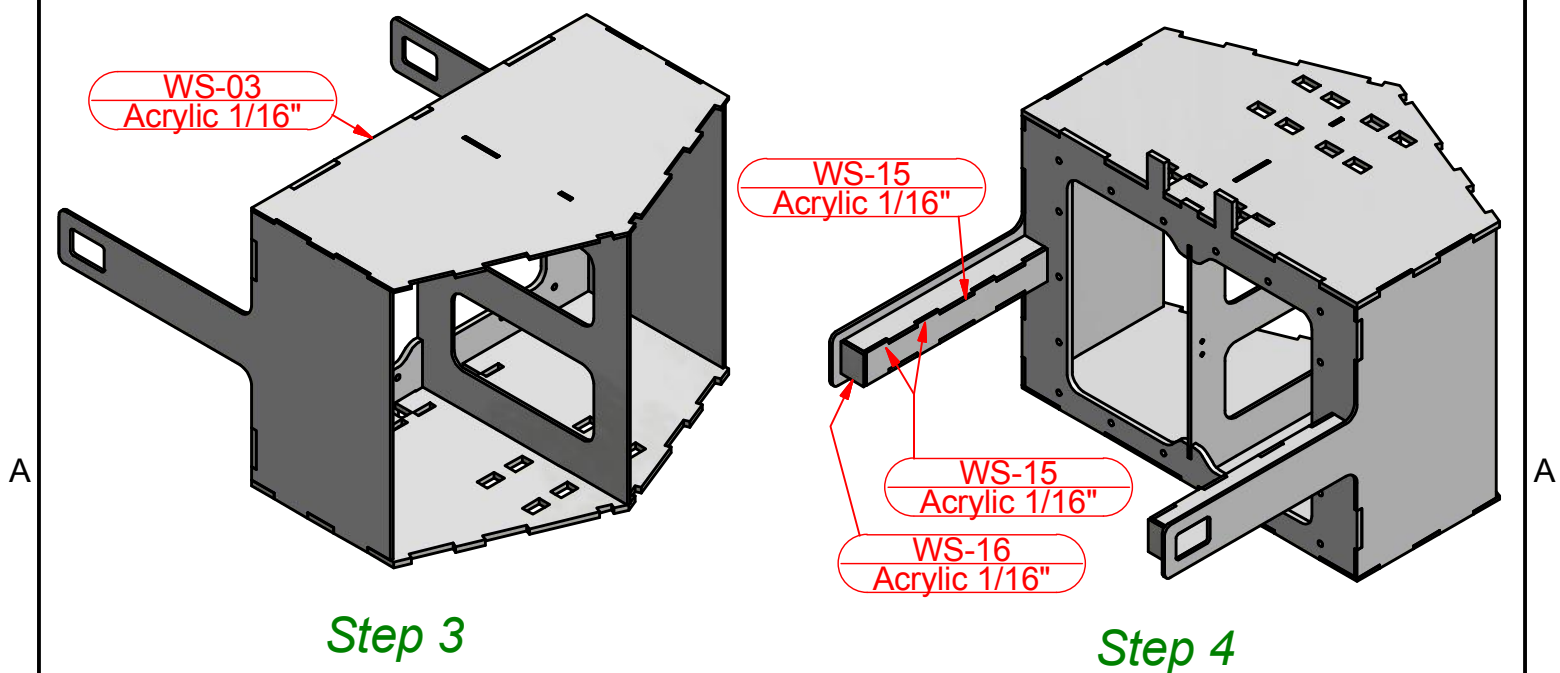
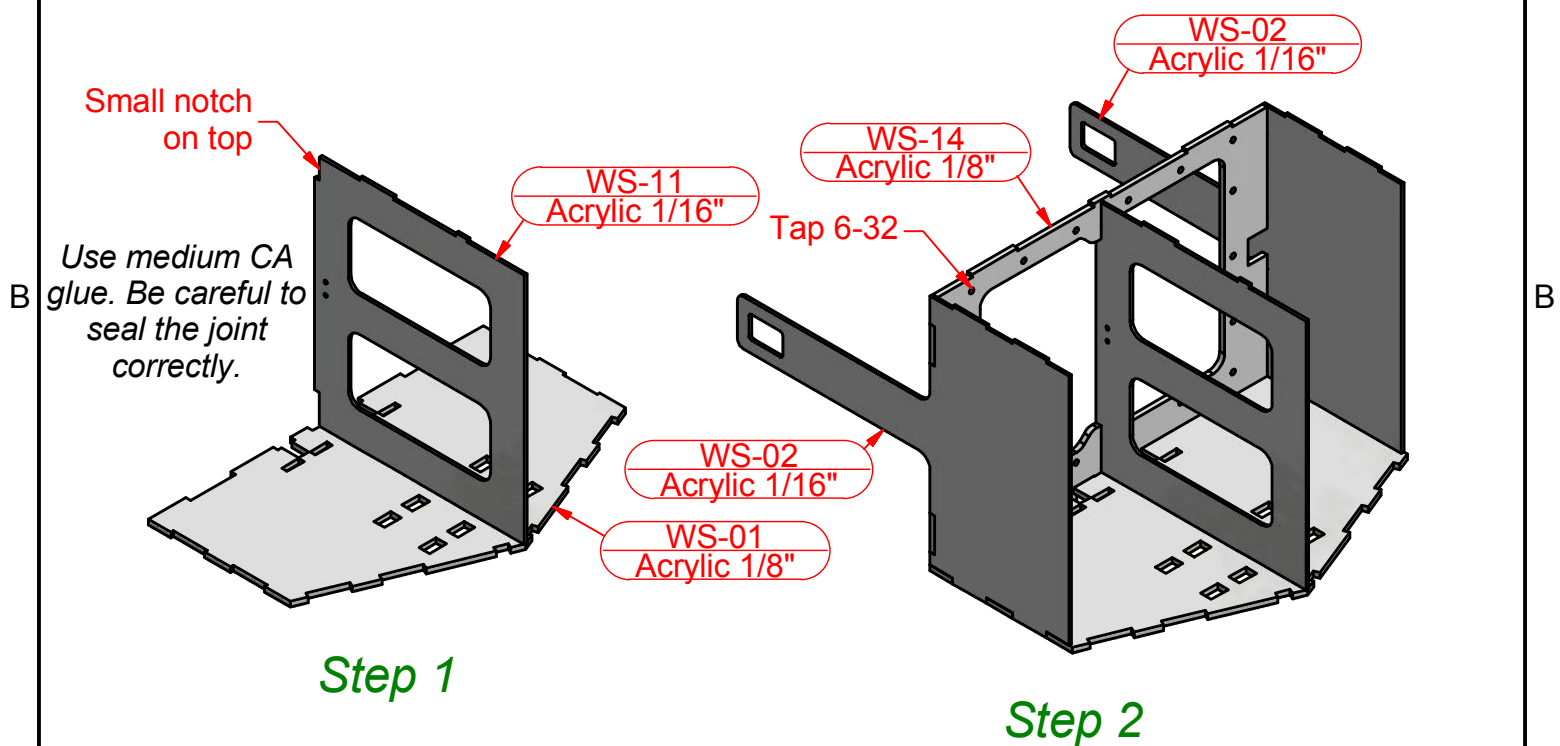


Step 2



Water door ass'y

CL-415 water system Tank





CL-415 water system Tank

Use #KAS155 as guide.

KAS155
Square brass

WS-13
Acrylic 1/8"

WS-13A
Acrylic 1/8"

WS-12A
Acrylic 1/4"

See "Brass parts detail" sheet
for notch dimensions.

Step 5

- Insert the second brass tube in the slotted bracket (WS12A).
- Insert the scoop ass'y in both brass tubes.
- Adjust the distance between the 2 brass tubes to obtain a smooth operation.
- Glue the brass tube.

WS-12
Acrylic 1/4"

WS-scoop
Scoop ass'y

Step 6

WS-R-01
Music wire Ø1/16"

Water dump door ass'y

WS-R-02
Music wire Ø1/16"

DUB595
Wheel collar Ø1/16"

DUB595
Wheel collar Ø1/16"

Step 7

WS-24
Acrylic 1/16"

- Fill the tank with water.
 - Check all join for leaks.
 - Pull on the steel wire and spring until the water dump doors stop leaking.
 - Secure the steel wire with the wheel collar.
- ** Only the tension from the spring will keep the doors closed **

WS-W-01
Steel wire

B-656
Tension spring



CL-415 water system Tank cover

